



ContentProbe Compliance and Monitoring Solutions

An overview....

The ContentProbe range comprises high performance 1U Video & Audio Compliance Recording and Monitoring units that can be used stand-alone or as part of a flexible IP networked monitoring system. ContentProbes can be deployed anywhere there is an internet connection and a signal you wish to monitor.

Record and store up to 720 days of video, view JPEG video thumbnails or live video streams from anywhere in the world, rewind streams instantly and export clips for compliance or logging purposes in Windows Media 9 format. Automatically compare video signals in real-time using Media FingerPrinting technology and receive alerts on errors by email, SMS, SMTP, SNMP or GPI.

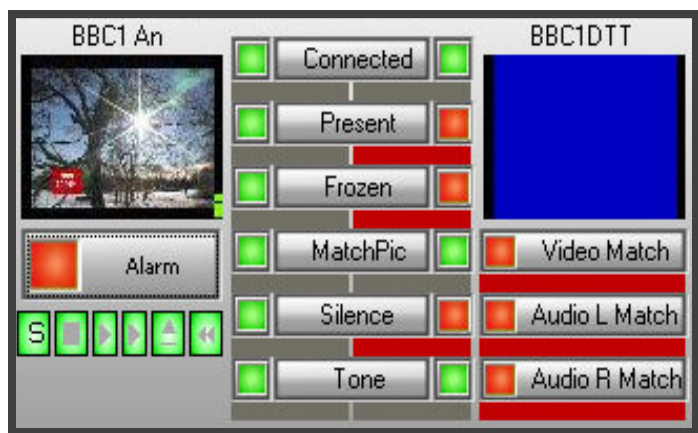
A Desktop Viewer gives quick and easy access to media and comprehensive engineering logs on any P.C, alternatively have the reports emailed. Standard layouts can be customized to suit your operation, from a single green light to a comprehensive multi-channel status display.



Desktop Viewer



Example emailed PDF Alert



Real-time matching of source & Off Air



Typical 2 Channel Monitoring Layout

The ContentProbe Range

CRF 2000 Regulatory TV Compliance/Logging Recorder with FaultTracking

The CRF stores a high quality browse proxy of the audio/video signals in Windows Media 9 format for up to 720 days for regulatory purposes. It allows clients to directly view and rewind live streams over the LAN/WAN, gives rapid access to older stored material by direct calendar access or playlist/EPG integration, mark up and export clips to tape, DVD or file and burn-in time code & channel ID.

Unique FaultTracking technology features give detection of Video Present, Video Frozen, Configured Stills, Audio Silence and Audio Tone. Alarms can be via GPI/SMTP/SNMP/SMS.

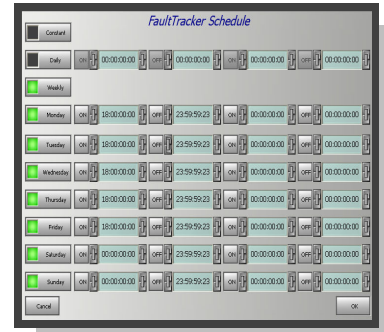
The CRF is a high end quad core server with RAID5, battery protected cache, hot swap drives and dual hot swap PSUs. It is available with 1, 2 or 4 input channels in a 1RU chassis with up to 720 days storage at 512kb/s.



View & export clips



Log viewer access to media



Alarm Scheduling

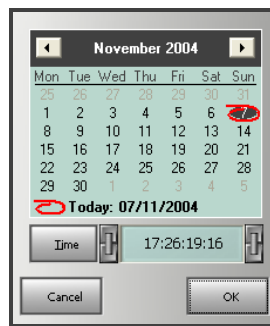
CRE 2000 Entry Level Regulatory TV Compliance/Logging Recorder

The CRE stores a high quality browse proxy of the audio/video signals in Windows Media 9 format for up to 720 days for regulatory purposes. It allows clients to directly view and rewind live streams over the LAN/WAN, gives rapid access to older stored material by direct calendar access or playlist/EPG integration, mark up and export clips to tape, DVD or file and burn-in time code & channel ID. This model does not include FaultTracking capabilities.

The CRE is a high end quad core server with RAID5, battery protected cache, hot swap drives and dual hot swap PSUs. It is available with 1, 2 or 4 input channels in a 1RU chassis with up to 720 days storage at 512kb/s.



View & export clips



Access via Calendar



Time code input



Minipic mode

MRF TV Monitoring/Logging Recorder with FaultTracking

The MRF stores a high quality browse proxy of the audio/video signals in Windows Media 9 format for up to 300 days for logging/monitoring purposes. It allows clients to directly view and rewind live streams over the LAN/WAN, gives rapid access to older stored material by direct calendar access or playlist/EPG integration, mark up and export clips to tape, DVD or file and burn-in time code & channel ID.

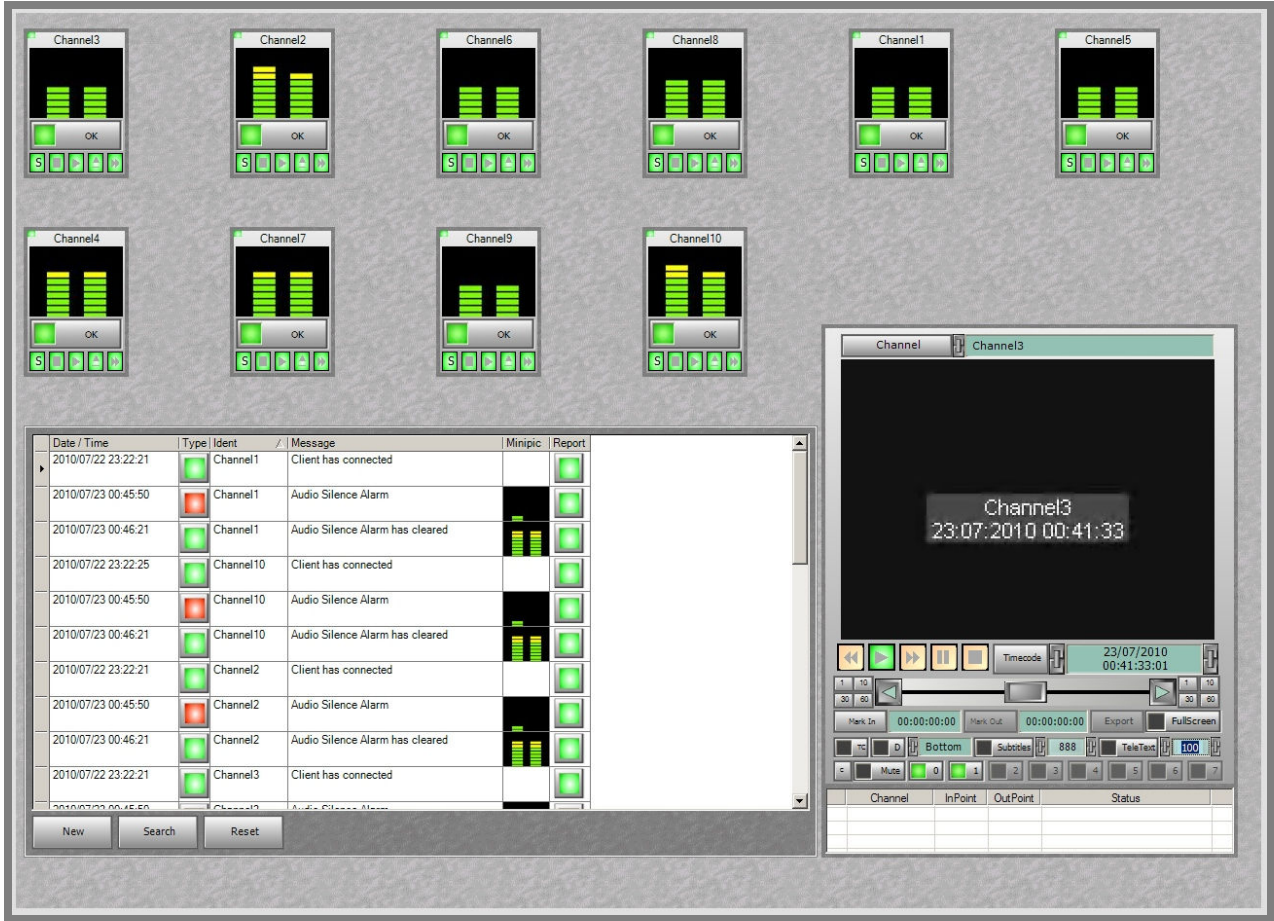
Unique FaultTracking technology features give detection of Video Present, Video Frozen, Configured Stills, Audio Silence and Audio Tone. Warning alarms can be via E-mail or SNMP (also SMS or GPI with hardware option).

The MRF is a commercial quad core server with RAID1 storage. It is available with 1, 2 or 4 input channels in a 1RU chassis with up to 300 days storage at 512kb/s.

The ContentProbe Range

MRF Radio Monitoring Recorder

These compact 1RU servers will record up to 32 channels of AES/EBU audio, or 16 Balanced Analogue channels, or up to 16 FM/AM radio channels using internal tuners and are ideal for regulatory and logging applications. All MRF units include FaultTracker as standard which monitors for Audio Silence and Audio Tone. Alarms by SNMP & E-mail (also SMS or GPI with hardware option). Also features On-demand Streaming and Instant Rewind of channel.

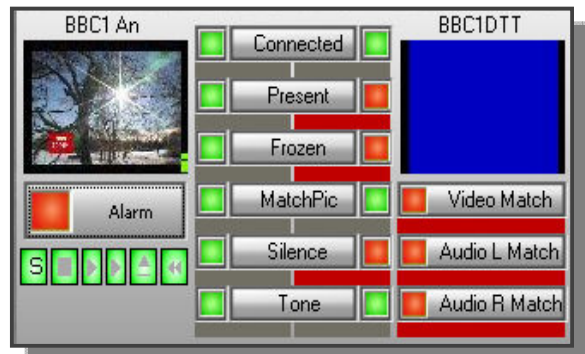


Media FingerPrint Generation



This powerful module can be added to any of the ContentProbe models and generates Media FingerPrint data of any video & audio signal which can then be used to compare any number of TV signals in real-time and check for content match. FingerPrint data is like "DNA for video" providing an accurate method of checking and comparing signals in real-time. For further information see separate documentation.

Real-time matching of source & Off Air signals





Features & Options	Model				
	FTS1000	FTV1000	MRF1000	CRE2000	CRF2000
Compliance Recording	x	x	✓	✓	✓
Mark up and export clips	x	x	✓	✓	✓
RAID5 Protection with battery backup	x	x	x	✓	✓
90 to 300 Days Storage at 512kb/s (total)	x	x	○	○	○
360 Days Storage at 512kb/s (total)	x	x	x	○	○
720 Days Storage at 512kb/s (total)	x	x	x	○	○
Archive/expanded storage module	x	x	○	○	○
AdCert Compatible	✓	✓	✓	✓	✓
FaultTracker	✓	✓	✓	x	✓
Video Present Detection	✓	✓	✓	x	✓
Video Freeze Detection	✓	✓	✓	x	✓
Audio Silence Detection	✓	✓	✓	x	✓
Audio Tone Detection	✓	✓	✓	x	✓
Image/Still Detection from list	✓	✓	✓	x	✓
Scheduled monitoring	✓	✓	✓	x	✓
Full logging of all alerts/errors	✓	✓	✓	x	✓
Alert level/delay user definable by channel/type	✓	✓	✓	x	✓
Email error reports with PDF	✓	✓	✓	x	✓
Report log annotation	✓	✓	✓	x	✓
Email error reports with 30 second WM9 file	✓	✓	✓	x	✓
Email Alarms	✓	✓	✓	x	✓
SNMP Alarms	✓	✓	✓	x	✓
GPI Alarms	○	○	○	x	○
SMS Alarms	○	○	○	x	○
Daily Reports	○	○	○	x	○
Monitoring live streams	✓	✓	✓	✓	✓
Instant Rewind/rewind live signal	✓	✓	✓	✓	✓
24 Hour Browse Storage	✓	✓	✓	✓	✓
Video Thumbnail/JPEG's on PC desktop	✓	✓	✓	✓	✓
Confidence Audio Level indication on desktop	✓	✓	✓	✓	✓
User definable PC desktop layouts	✓	✓	✓	✓	✓
FingerPrint Generation Module/Verification	○	✓	○	○	○
Real-time matching of FingerPrints	○	✓	○	○	○
Hardware 1RU	✓	✓	✓	✓	✓
Available with 1, 2 & 4 input channels in 1RU	✓	✓	✓	✓	✓
Available for Composite, SDI & HD SDI	✓	✓	✓	✓	✓
RAID5 Protection	x	x	x	✓	✓
RAID1 Protection (mirrored drives)	✓	✓	✓	x	x
Hot Swap Drives in Caddy	x	x	x	✓	✓
Hot Swap PSU	x	x	x	✓	✓
Tool free access to case	x	x	x	✓	✓

- ✓ Standard
- Option
- x Not currently available

Correct at time of publishing, subject to change without notice.